

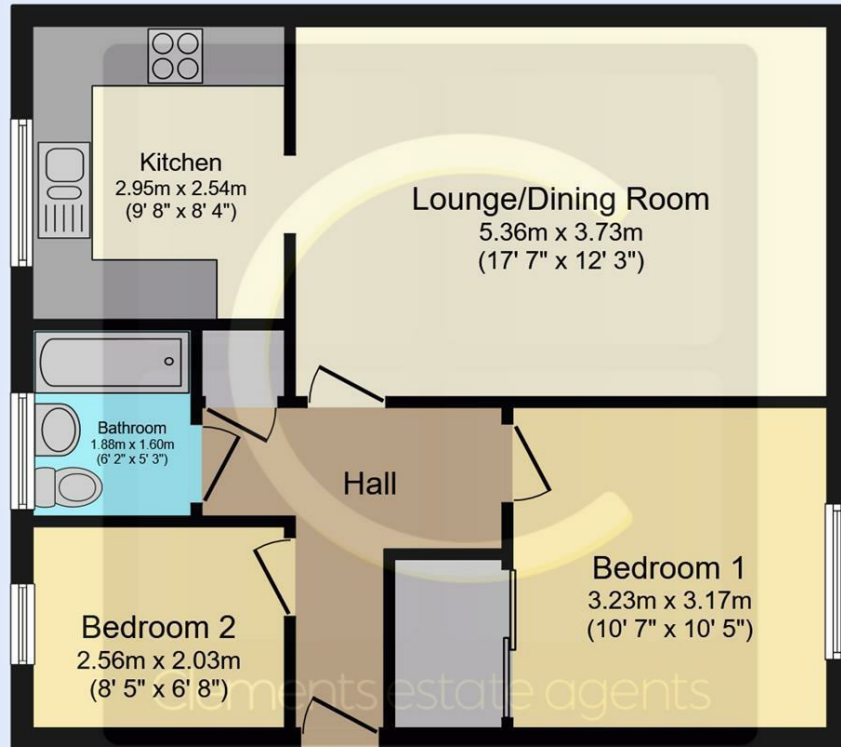


## Downside, Hemel Hempstead, HP2

Clements Estate Agents are delighted to market this well presented first floor purpose built flat. The property boasts a 17'7 lounge, modern fitted kitchen, two bedrooms, bathroom, gas central heating and double glazing. Located in a Cul de Sac close to the Old Town and within easy reach of the Town Centre with it shopping, restaurant and travel facilities. Available Now!

- First Floor Flat
- Spacious Room Sizes
- Two Bedrooms
- 17'7 Lounge
- Fitted Kitchen
- Gas Central Heating
- Double Glazing
- Available Now
- Call to View

**£1,400 PCM**



First Floor

This floor plan is for illustrative purposes only. It is not drawn to scale. Any measurements, floor areas (including any total floor area), openings and orientations are approximate. No details are guaranteed, they cannot be relied upon for any purpose and do not form any part of any agreement. No liability is taken for any error, omission or misstatement. A party must rely upon its own inspection(s). Powered by [www.Propertybox.io](http://www.Propertybox.io)

